



Compass Community

BLOOMING BEGINNNINGS

The Compass Art Center has transformed into a flourishing art hub, featuring 12,000 square feet that house classrooms, galleries and artists' studios. The vibrant and aesthetically pleasing building exudes a sense of creativity that harmonizes perfectly with the essence of springtime.

Introducing "Community"--the monthly newsletter serving as the voice for the vibrant community of students, art teachers, and featured artists at the Compass Art Center. Dive into insightful interviews, discover upcoming events and opportunities, and engage in interactive questions and answers, aimed at shaping our collective art community towards excellence. Join us on the artistic journey as we celebrate creativity and collaboration in every issue of "Community".



Elanna Haywood, MAP 2026.



Dear Compass Community,
These are three practices that will put you in the path for success:

1. Pursue excellence, engage in contemplation, seek unconventional perspectives and colors.
2. Learn from accomplished artists, share knowledge, stay informed on trends, and network.
3. Embrace technology.

The members of our community are intentionally and intuitively working on these goals in their own way everyday. By demonstrating these practices in action, we aim to inspire and engage art enthusiasts, collectors, and fellow artists alike, fostering a vibrant and inclusive artistic community. Use Gallery as a tool to connect to the best practices, the best outlook and the best support systems need to thrive as art professionals.

Glen Kessler, Director
Compass Art Center

Compass *Classes*

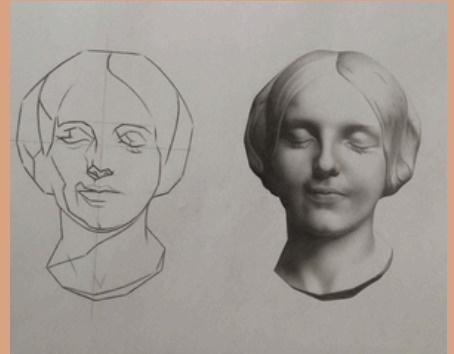
THE BARGUE METHOD SAMEER SHARMA

FRIDAYS, MAY 31-JULY 12 • 10AM-1PM

\$295

This 6-week class used to train NeoClassical period artists teaches students drawing and hand-eye coordination for both painting and drawing. The class is suitable for all skill levels, from beginners to experienced artists seeking a refresher.

[learn more](#)



INSTRUCTOR: DORA PATIN

TROMPE L'OEIL PAINTING DORA PATIN

MONDAYS, JUNE 3-JULY 8 • 10:30AM-1:30PM

\$350

Students will discover the techniques of Trompe L'oeil painting with guidance from experienced artist Dora Patin. The course will delve into creating realistic, three-dimensional illusions on canvas, adding depth and intrigue to artwork. Prior experience with oil paint is recommended for participants.

[learn more](#)

CLASSICAL DRAWING • LAMINE HAMDAD • TUESDAYS, APRIL 16-MAY 21 • 9-11AM PAINTING FROM PHOTOS • LISA DENISON • TUESDAYS, APRIL 16-MAY 21 • 6:10-9:10PM FIGURE DRAWING • SAMANTHA STOVER • SATURDAYS, APRIL 20-MAY 25 • 10AM-1PM LONG POSE MODEL SESSIONS • THURSDAY, MAY 9-30 • 3-5:30PM PLEIN AIR PAINTING • SAM GUINDON • SATURDAYS, APRIL 20-MAY 25 • 10AM-1PM FIGURE PAINTING • SAMANTHA STOVER • SATURDAYS, APRIL 20-MAY 25 • 2-5PM LANDSCAPE PAINTING ON SITE • GLEN KESSLER • FRIDAYS, APRIL 26-MAY 31 • 9:30-12:30PM PAINTING THROUGH THE LENS • GLEN KESSLER • FRIDAYS, APRIL 26-MAY 31 • 1:30-4:30PM LONG POSE MODEL SESSIONS • THURSDAY, MAY 9-30 • 3-5:30PM THE BARGUE METHOD • SAMEER SHARMA • FRIDAYS, MAY 31-JULY 12 • 10AM-1PM TROMPE L'OEIL PAINTING • DORA PATIN • MONDAYS, JUNE 3-JULY 8 • 10:30AM-1:30PM OIL PAINTING WITH CONFIDENCE • JENNIFER LYNN BEAUDET • MONDAYS & WEDNESDAYS, JUNE 3-26 • 5:30-8:30PM PAINTING THROUGH THE LENS • GLEN KESSLER • FRIDAYS, JUNE 7-AUGUST 2 • 10AM-1PM PAINTING IN WATERCOLOR • VICKY ZHOU • SUNDAYS, JUNE 30-JULY 28 • 1-4PM



Take These Broken Wings



I Will Conquer



Grace

How do you balance your work as an oncologist with your passion for portrait painting?

I have passion for both but painting is very relaxing.

What inspired you to start painting portraits of your patients?

As a MAP student, my graduation thesis was portraits of patients that had been with my practice for a long time. I know my patients very well and that makes it easy to capture their souls in my work.

Can you share a particularly meaningful experience you've had while painting a patient's portrait?

My oldest patient passed at the age of 103. I took care of her. I took care of her daughter and her son in law. When I revealed her portrait all the grandchildren flew in from California to see it, and now that she passed away they cherish it.

How do you approach capturing the essence of your patients in your paintings?

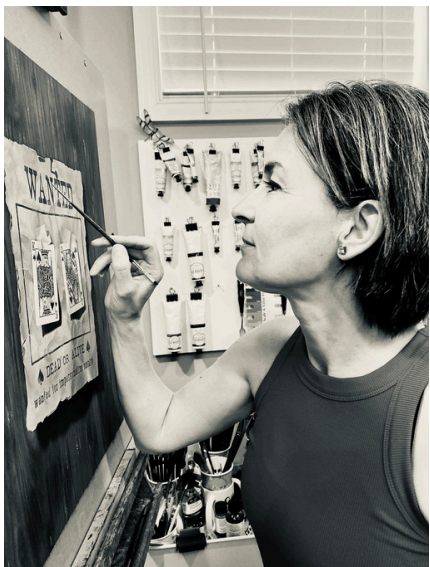
I like to paint realistic portraits. I do my own photoshoots. Some of my patients have been with me for over 20 years there is mutual trust.

Studio
Talk



Isabella Martire
Compass MAP

Studio *talk*



Dora Patin
Compass Instructor



The Other Side

Can you tell us about your journey as an artist? How did you first get started and what led you to pursue a career in art?

As a stay-at-home mother, I struggled with finding work after raising three kids. I rediscovered my love of art through sketching and painting and enrolled in a Master Artist Program in 2017, pursuing my passion and finding myself. I love my job!

Are there any specific artists or artworks that inspire or influence your own creative process?

As an artist, I find inspiration in contemporary artists like Julie Beck, CJ Hendry, and Bruno Logan, as well as in art history, particularly the work of Rene Magritte. I am also studying the history of trompe l'oeil painting and discovering new artists. I value the support of my local art community, especially a group of female artists with whom I exchange ideas and experiences and participate in shows together. This artist community provides me with mental inspiration, support, and connection. Being by yourself in the studio can be lonely sometimes and friends in the art community are essential..

Your specialty lies in trompe l'oeil oil painting and hyper-realism. Can you elaborate on what these terms mean and how you incorporate them into your artistic practice?

Trompe l'oeil, a French term meaning "to fool the eye," is a type of optical illusion. Its goal is to make the viewer believe what they see is real, prompting them to take a second look. I began painting in this style in 2022 and found it to be a perfect fit for my personality. Trompe l'oeil allows me to demonstrate precision, keen observation, humor, and magic. I prefer to work from life when setting up still life compositions but also use reference photos as tools in decision-making. Trompe l'oeil is playful and humorous, aiming to deceive the viewer's perception. My goal is to create pieces that make the viewer look closer, blurring the line between reality and illusion.

How do you approach capturing the unique characteristics and emotions of individuals in your paintings?

In choosing a subject for my paintings, I prioritize the emotional impact on the viewer and myself rather than focusing on the emotions of the subject itself. For instance, while my paintings of swimmers depict them as safe and comfortable, many of them subtly convey feelings of anxiety and struggle. It took me some time to understand that I was exploring my own emotions about my children (who serve as my models) growing up and leaving home through these themes.

Why do you incorporate the element of water into your paintings, and what challenges does this present?

Growing up, I was more comfortable in the water than out. I equated being in the water with freedom and joy. When it comes to painting themes, water is a good vessel for conveying those feelings, along with fear, anxiety and mystery. As a bonus, I love the reflections, refractions and opacity changes that add abstract to realistic subjects. I have spent so many hours studying and practicing underwater photography.

I still plan to continue my underwater series. I have so many cool photos now!

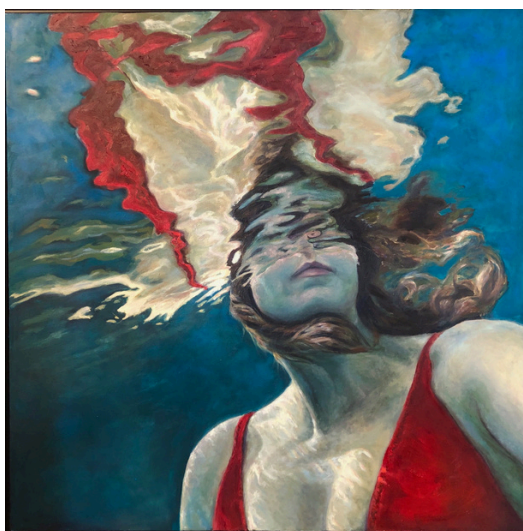
t

Studio Talk



Karesh Payne
Studio Artist

I didn't have much art experience before the MAP program. I was always interested in art but never took the time to learn about it. I took a class with Glen. I found him easy to talk to and super knowledgeable. I expressed my frustration with not having an avenue to learn to draw and paint in a logical cohesive way. About a year later he called me to say he had created a program that would address my needs. I signed up right away!



Nyad



Untitled

May 2024 | Edisi 1

Compass *Opening*



Untitled

Cathy Abramson

Dynamism

Featuring the remarkable works of ten local artists who have recently emerged on the art scene, each artist's creations possess a distinct and captivating quality.

Andrea van den Heever, Bo Woo, Cathy Abramson, Christine Merry, Isabella Martire, Kara Lin, Karash Payne, Ken Bachman, Lillian Klein, & Nan Dawkins

Compass Gallery North

April 1 through May 31.

Artists' Reception Friday, May 17th, 6-9pm

Appetizers and wine served

May 2024 | Edisi 1

Compass *Opening*



Untitled

Glen Kessler

Faculty Exhibition

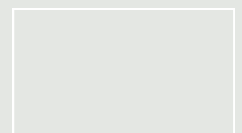
In this exhibition, the exceptional artistic talents of the Compass Atelier faculty are showcased. Our faculty members are renowned as some of the most accomplished figurative and representational artists in the region. Featured artists include: *Glen Kessler*, founder and director of the atelier, presents his works alongside *Dora Patin*, *Lamine Hamdad*, *Lisa Denison*, *Jennifer Lynn Beaudet*, *Sam Guindon*, *Sameer Sharma*, *Samantha Stover*, *Suzi Balamaci* and *Vicky Zhou*

Compass Gallery South

April 1 through May 31

Artists' Reception Friday, May 17th, 6-9pm

Appetizers and wine served



Compass Youth



YOUNG MASTERS ART STUDIO

supports 5 to 12-year-old artists and helps them learn art basics from trained faculty.

STONE BRANCH SCHOOL OF ART

serves middle and high school artists (ages 12-18) with portfolio development programs and stand-alone classes.